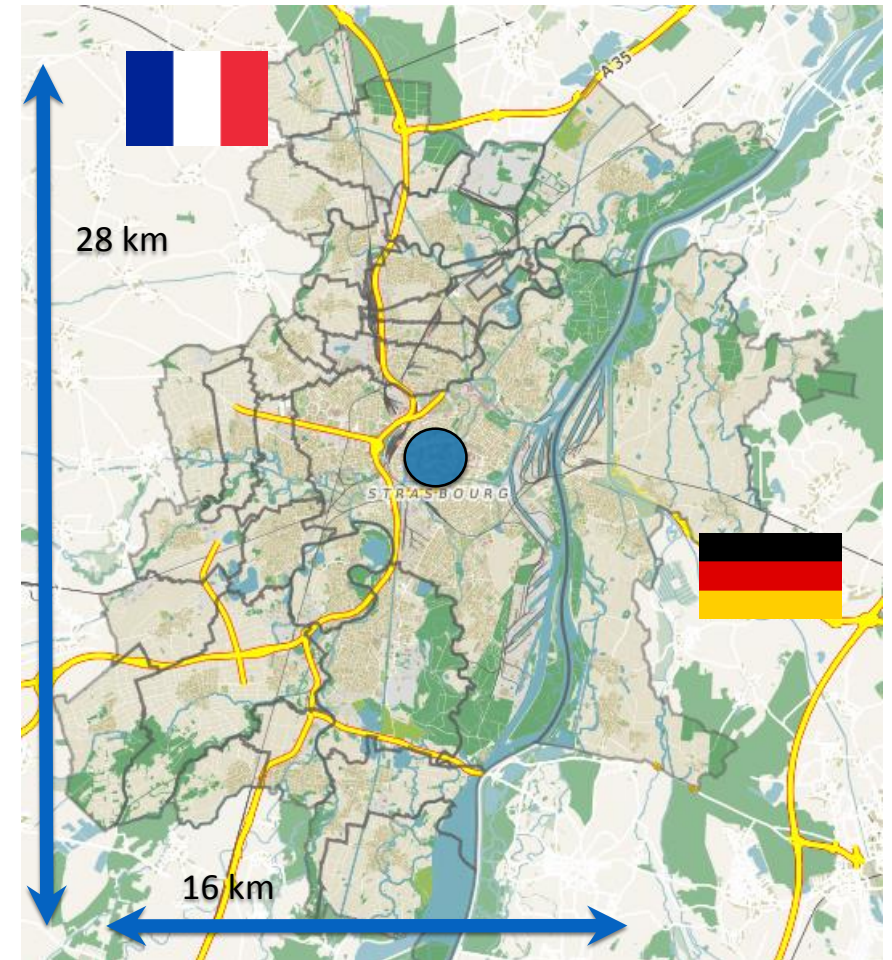




**Strasbourg.eu**  
eurométropole

The Strasbourg Formula for happy, urban,  
car-free living

FutureBuilt2016 - Oslo – 09/06/2016





## A strong cultural and architectural heritage

Since 1972, the city center is on the Unesco World Heritage list





## Seat of many european institutions

European Parliament, European Human Rights Court, Council of Europe, other administrations

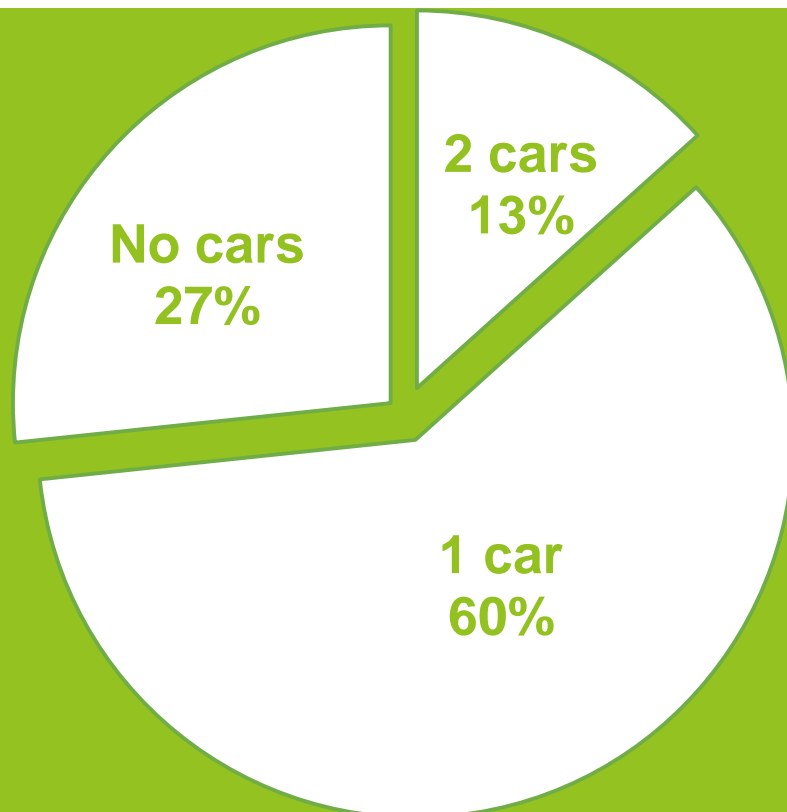




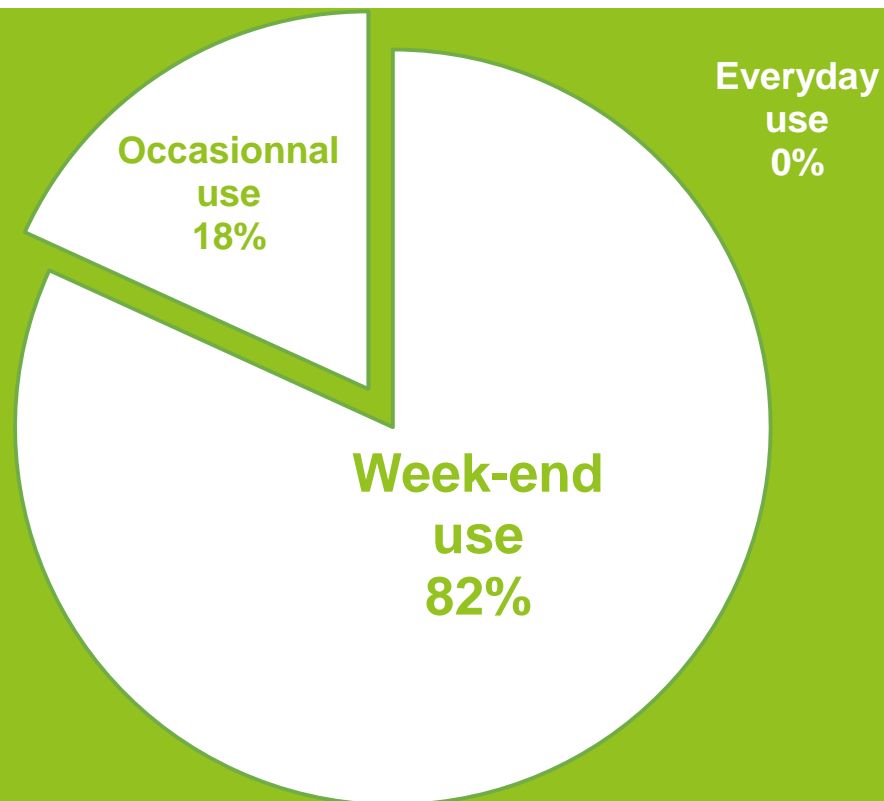
# Are we really a car-free city ?



## Car ownership rates

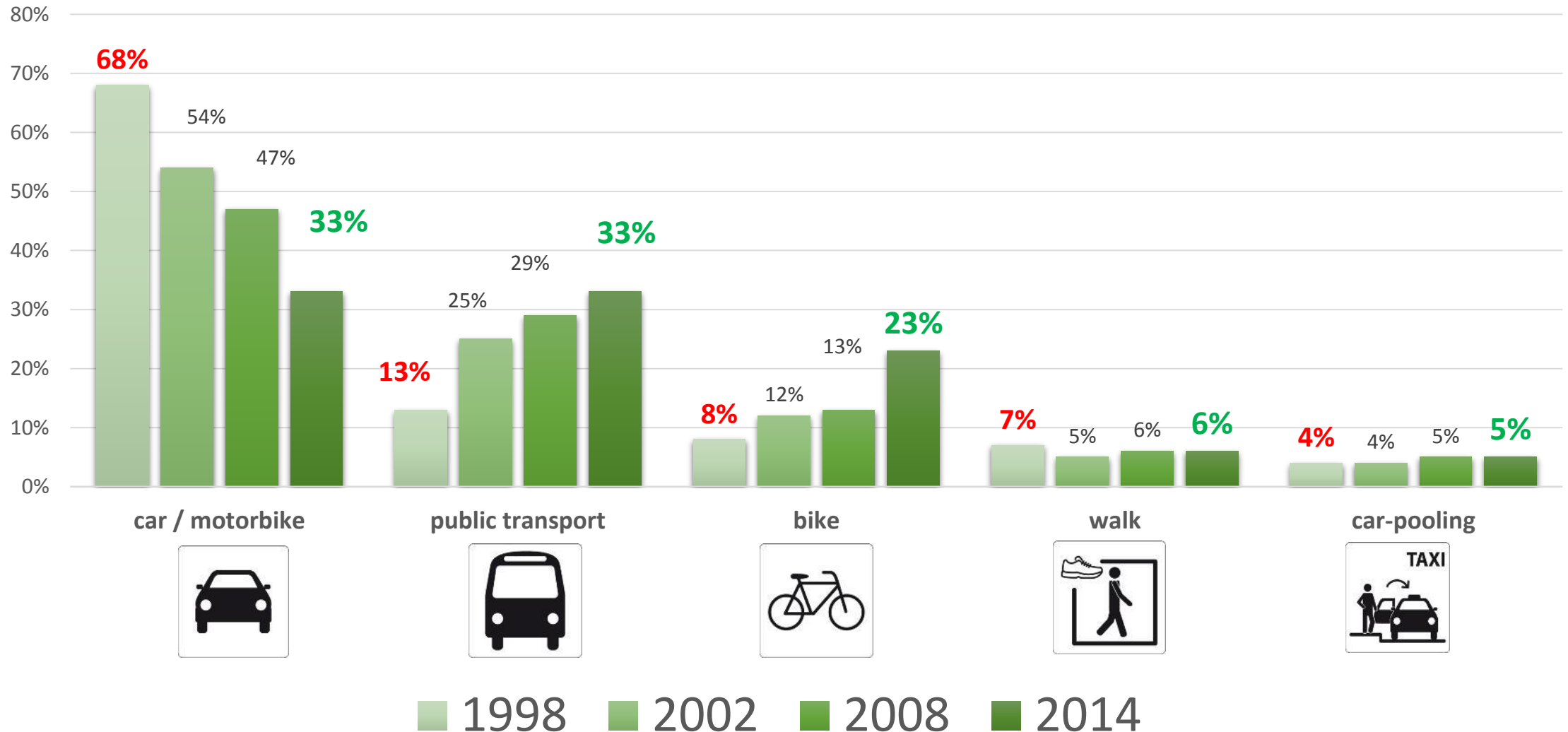


## Car use frequencies



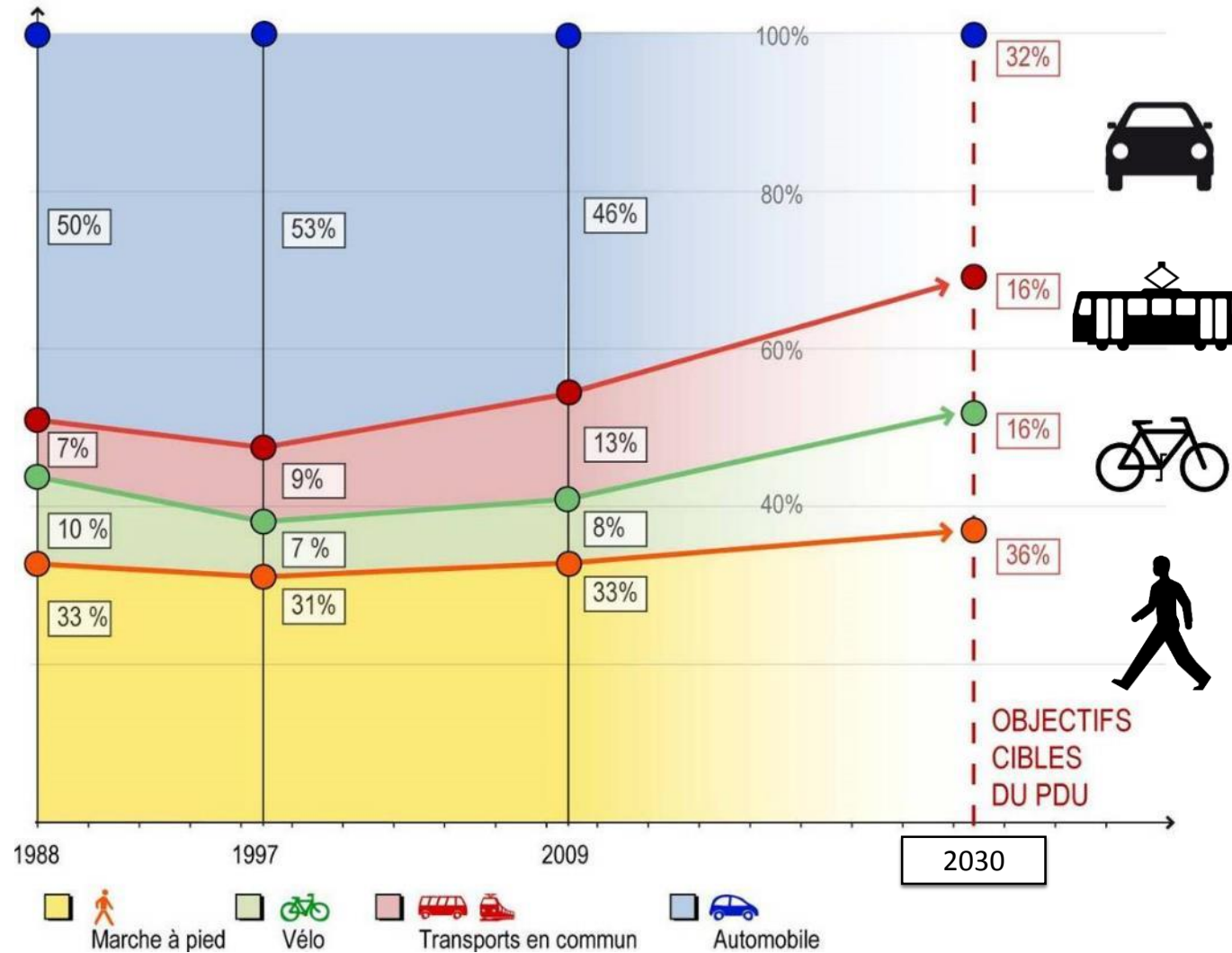


## How do the city employees come to work ?



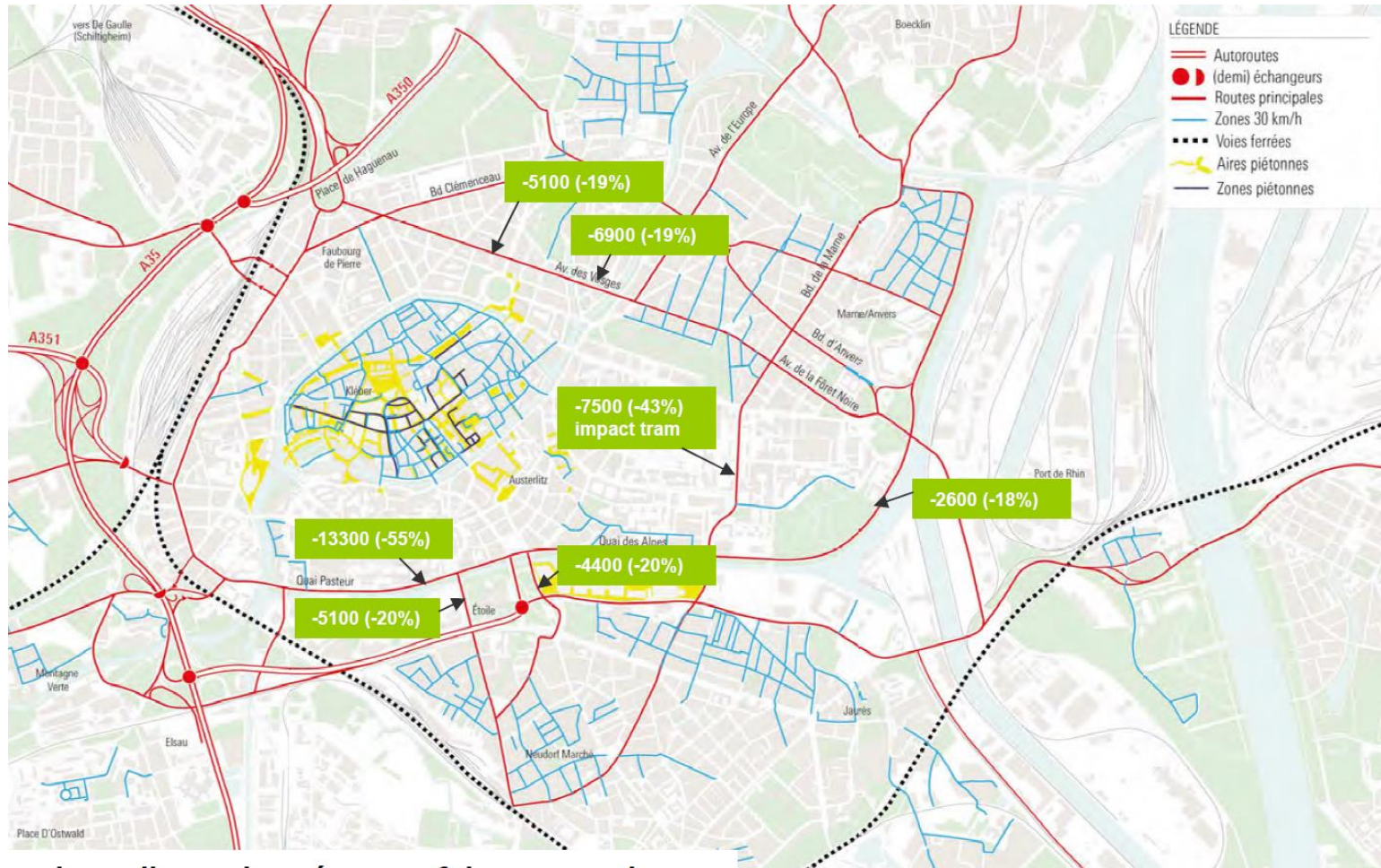


## The modal shares of Strasbourg

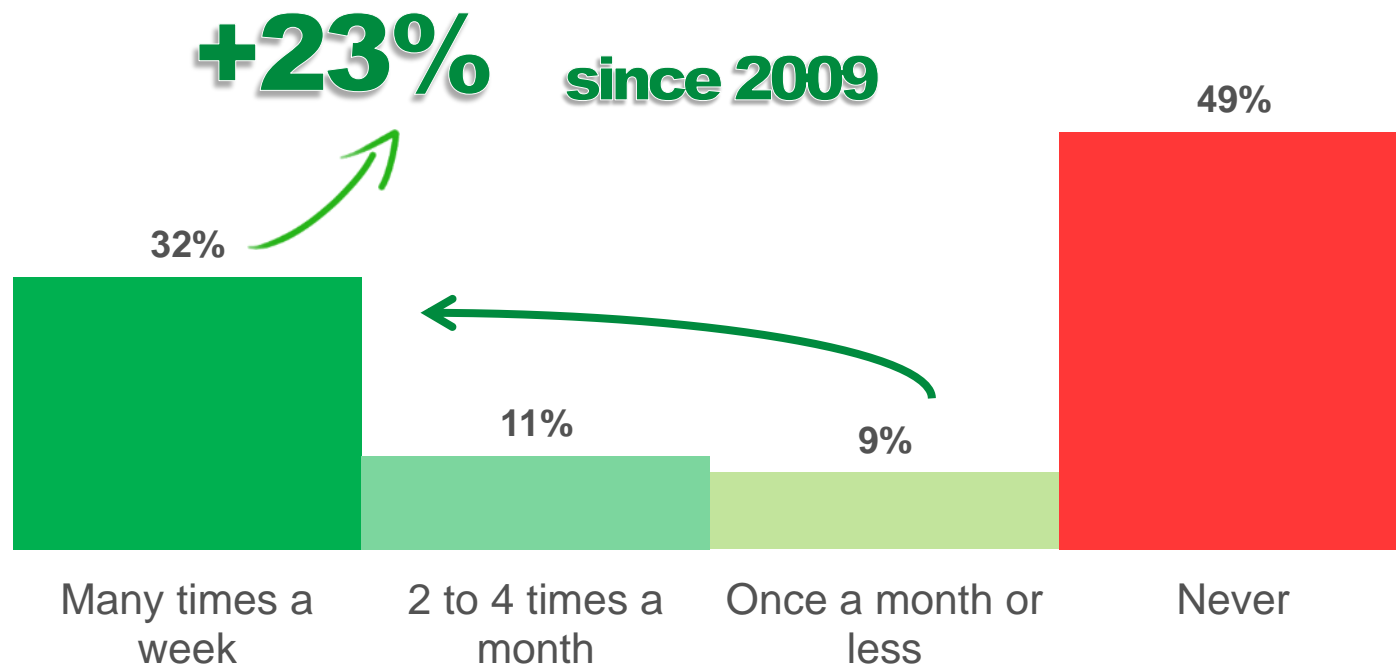
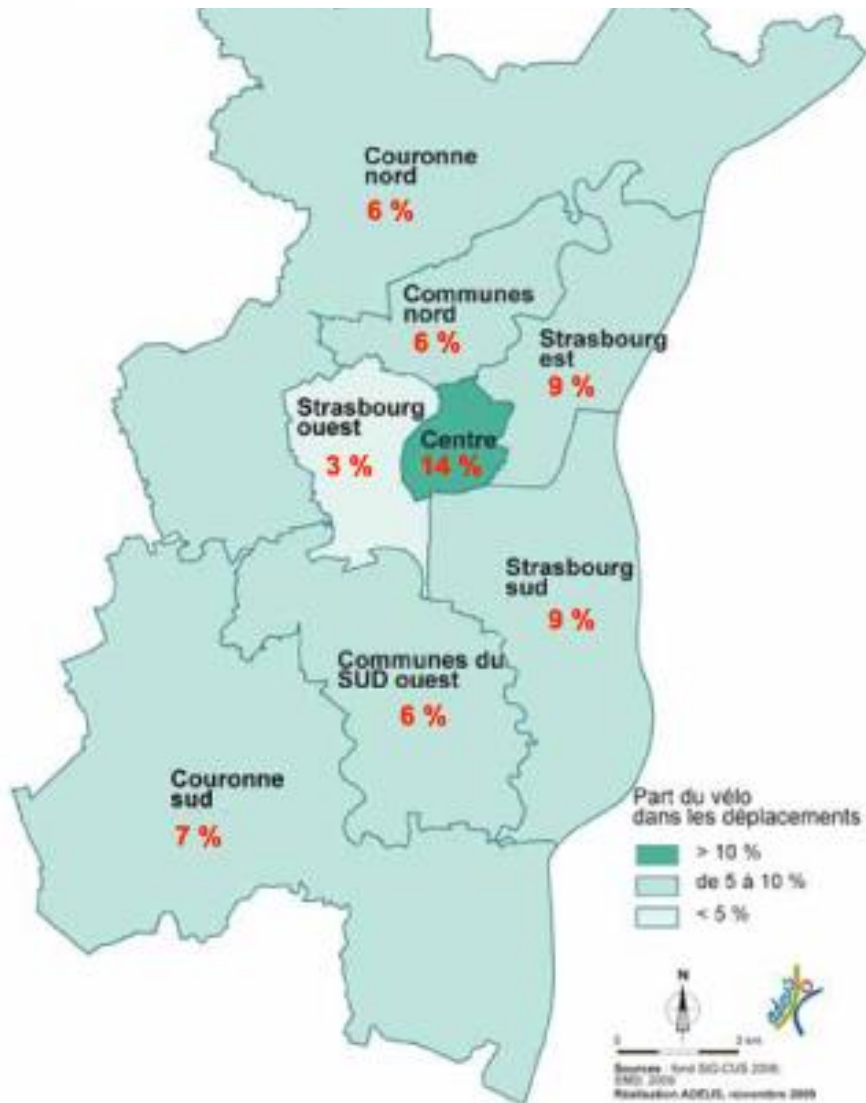




## Car traffic decrease for the last 10 years in the city center

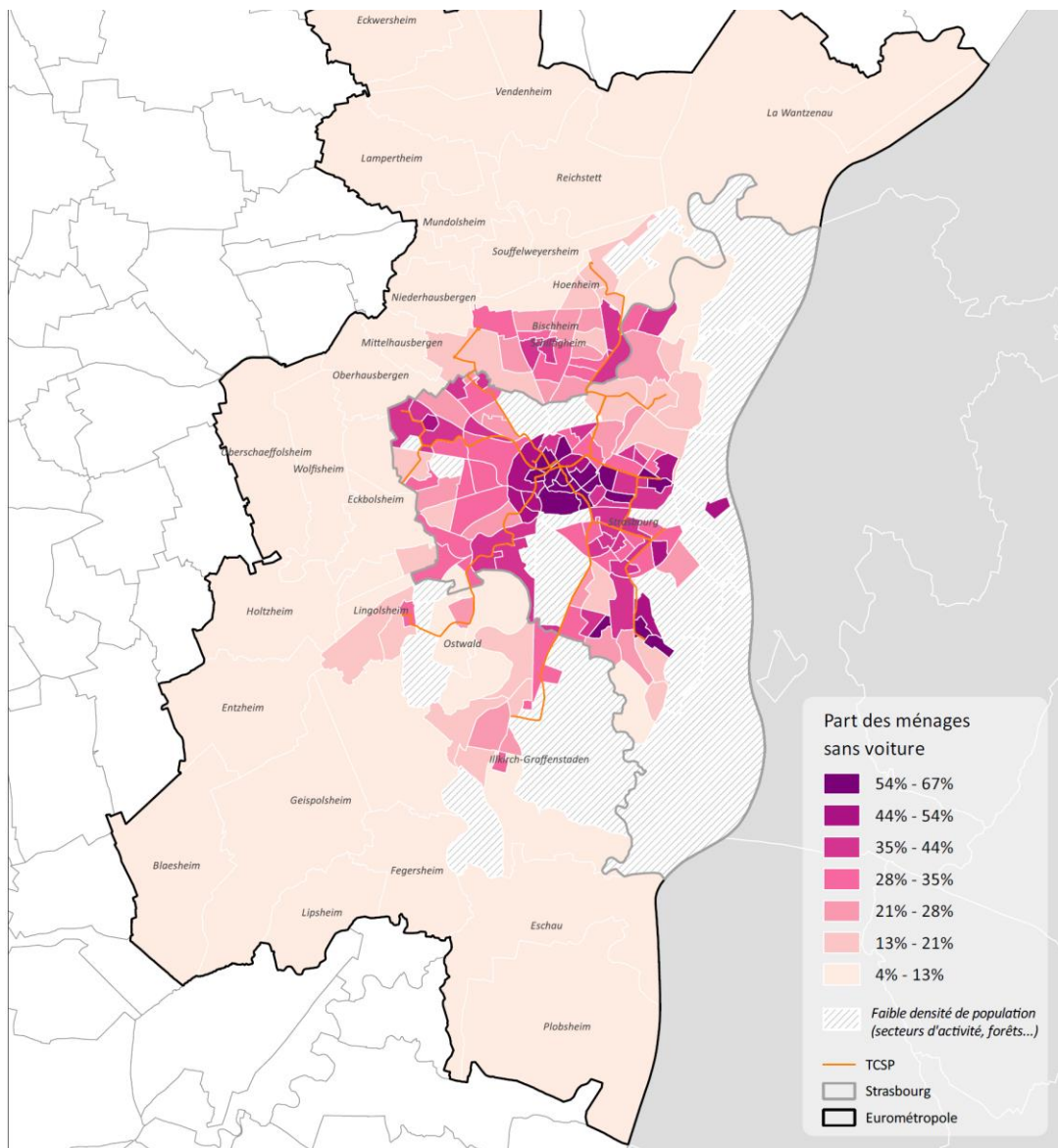


## Bike shares among all trips (2009)

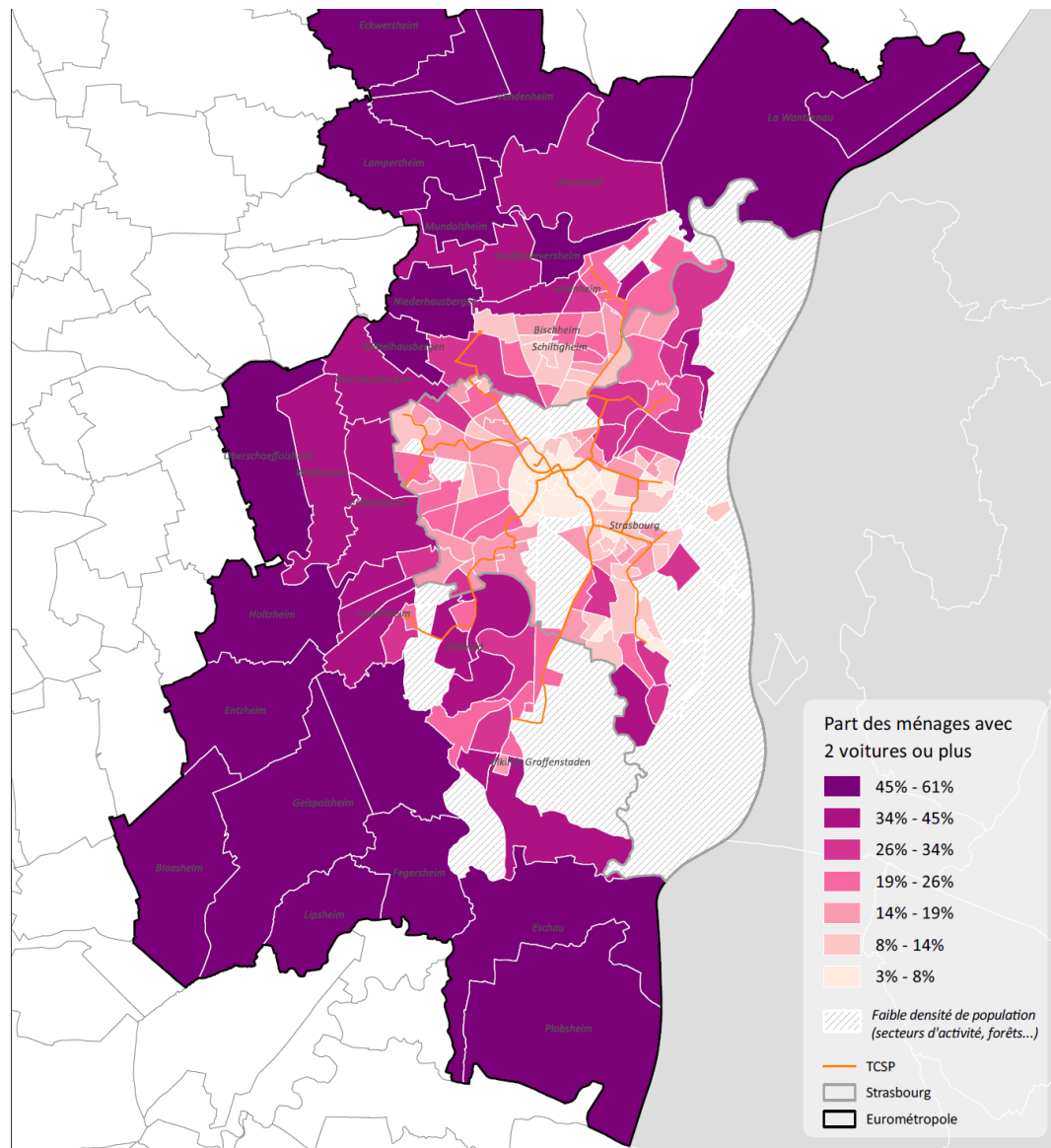




## Household share with no cars



## Household share with 2 cars and more



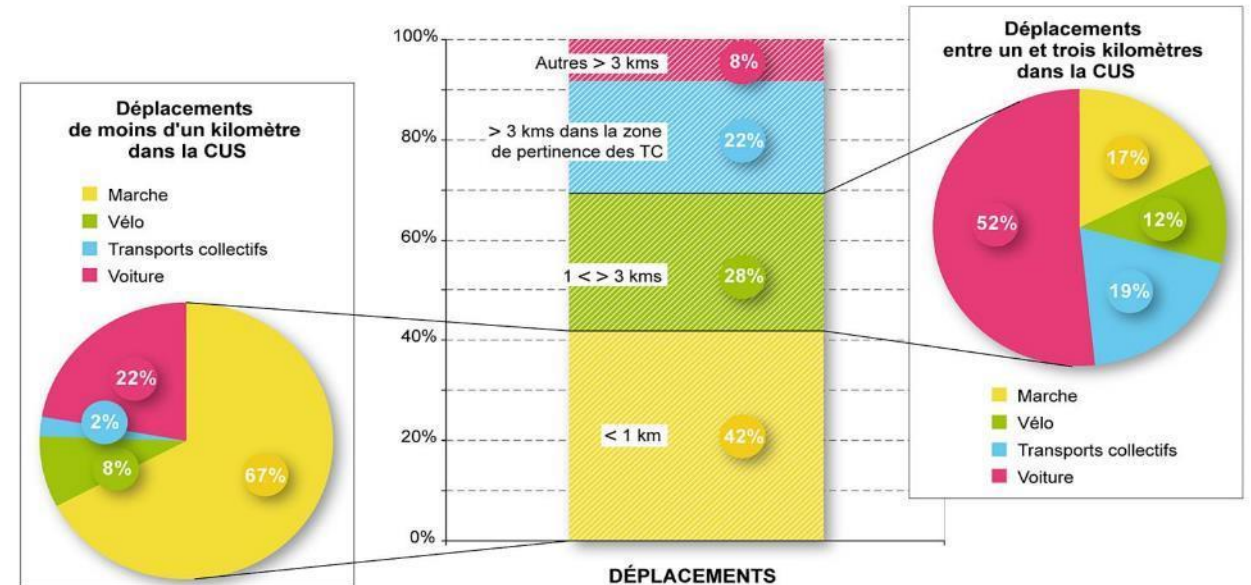
# How did we achieve these results ?



## Mobility policy vs transport policy



# It's all about rebalancing the modal share

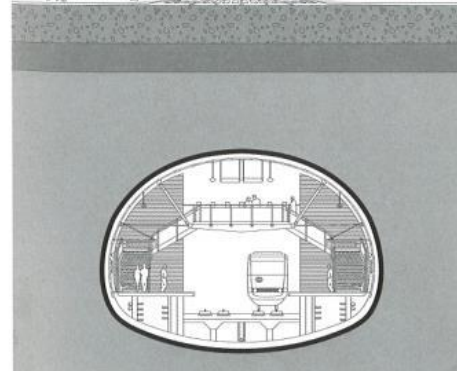
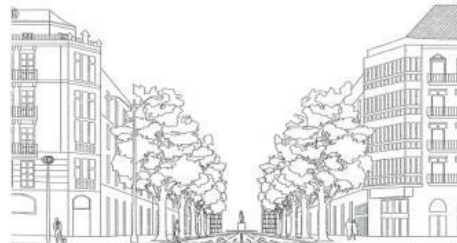


One motto : for each distance the right transport mode



## The 90's – begining of a new era

### subway versus tram

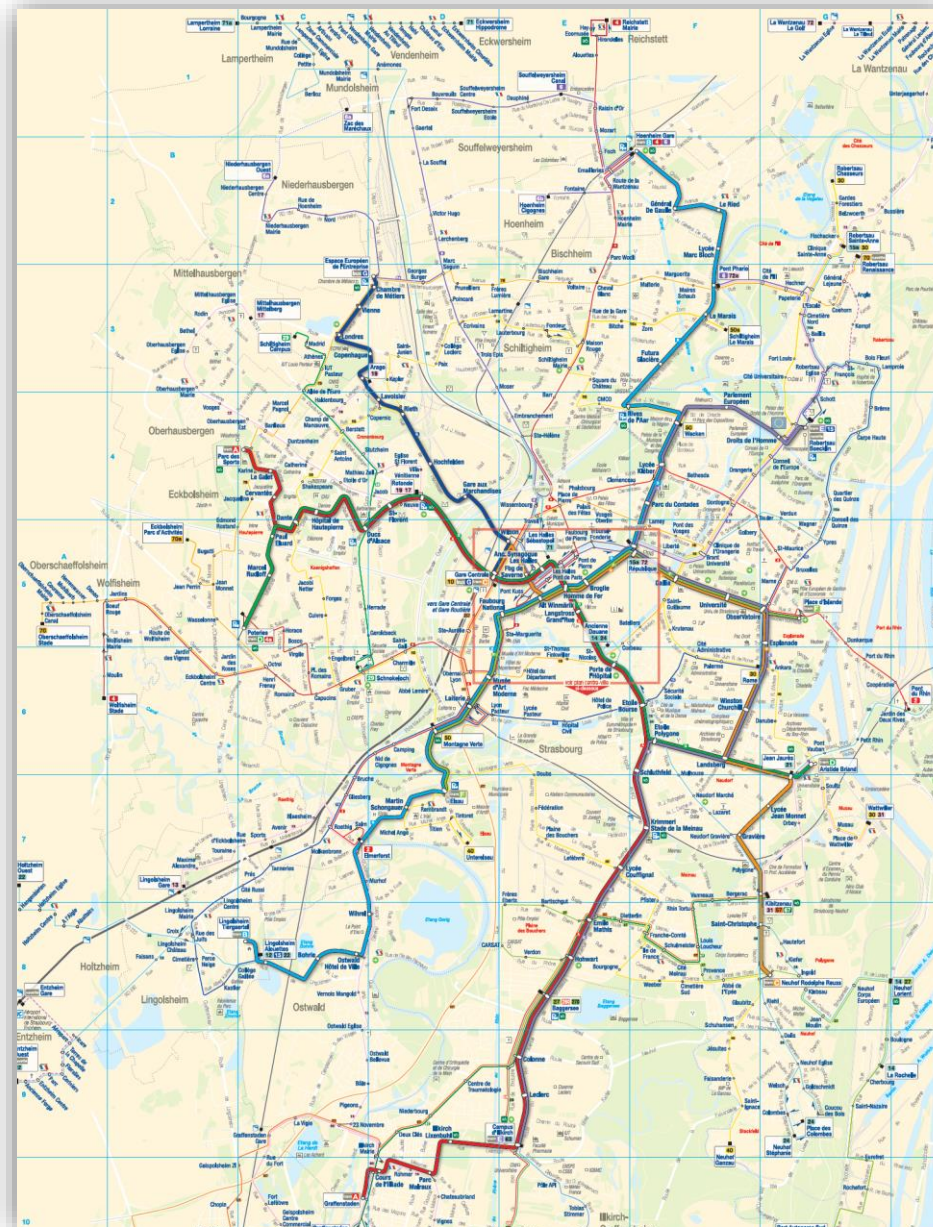




## The spine of our mobility policy : the tramway

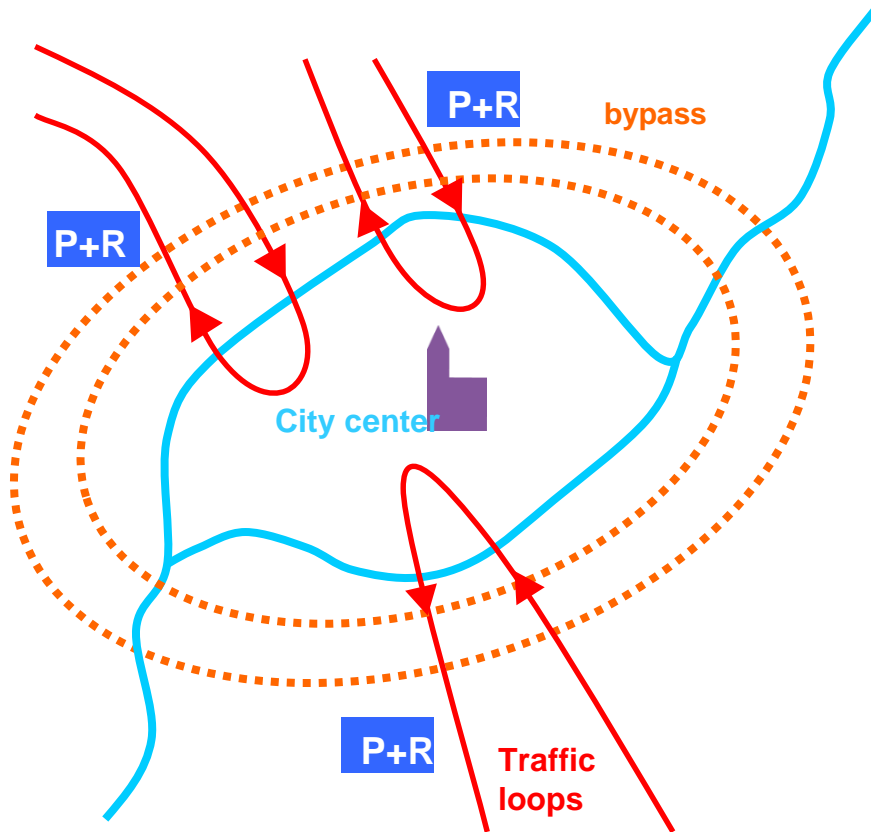


- 7 tramway lines,  
65 km of commercial lines
- 29 bus lines
- 95 millions trips per year (60 for the tramway)





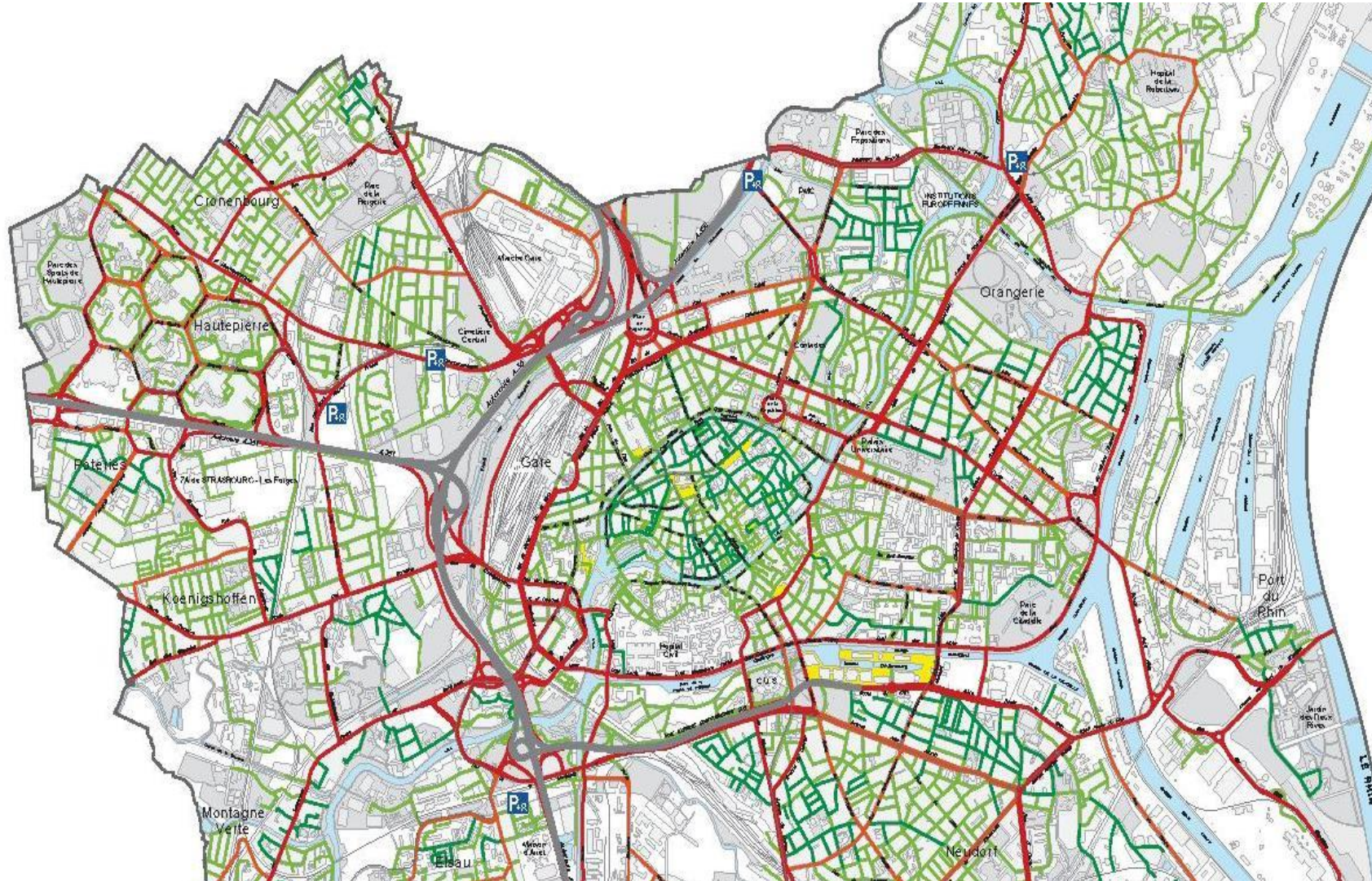
## Managing the car access to the city center



4230 parking spots in the P+R facilities



## Street hierarchical structure



one way

=

one use

=

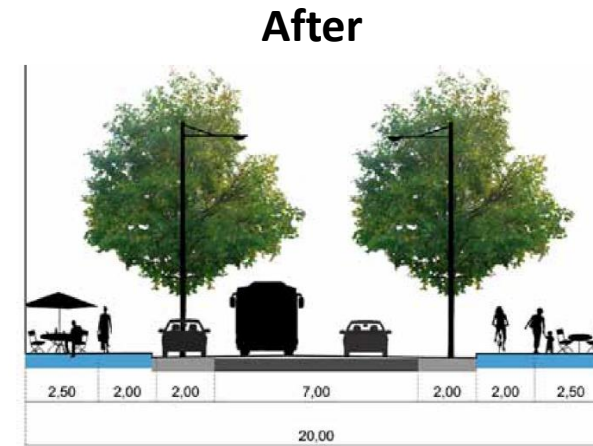
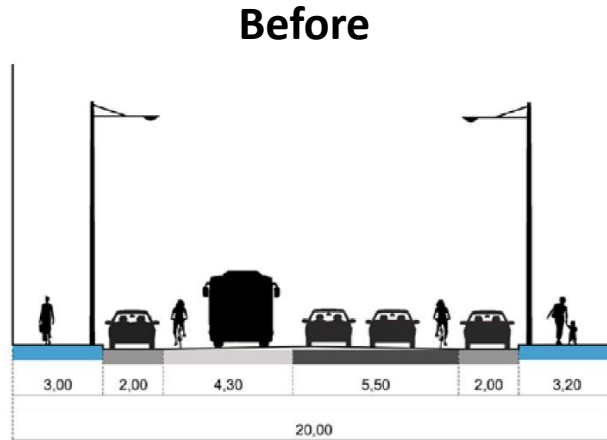
one design



## Make room for the right mode when needed

39% for  
pedestrians

50km/h speed  
limit

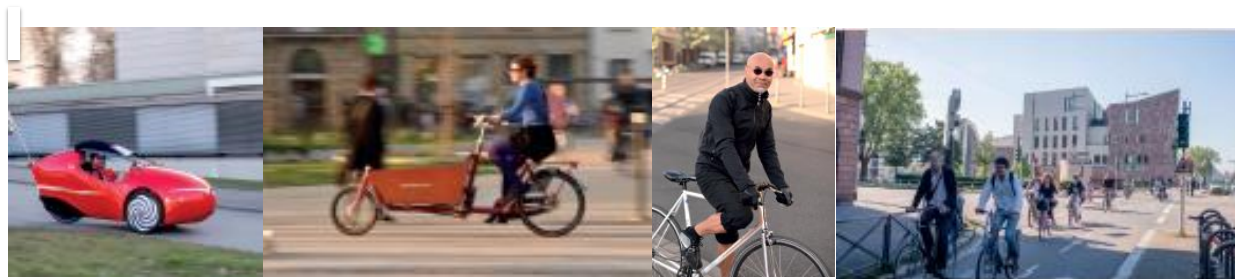
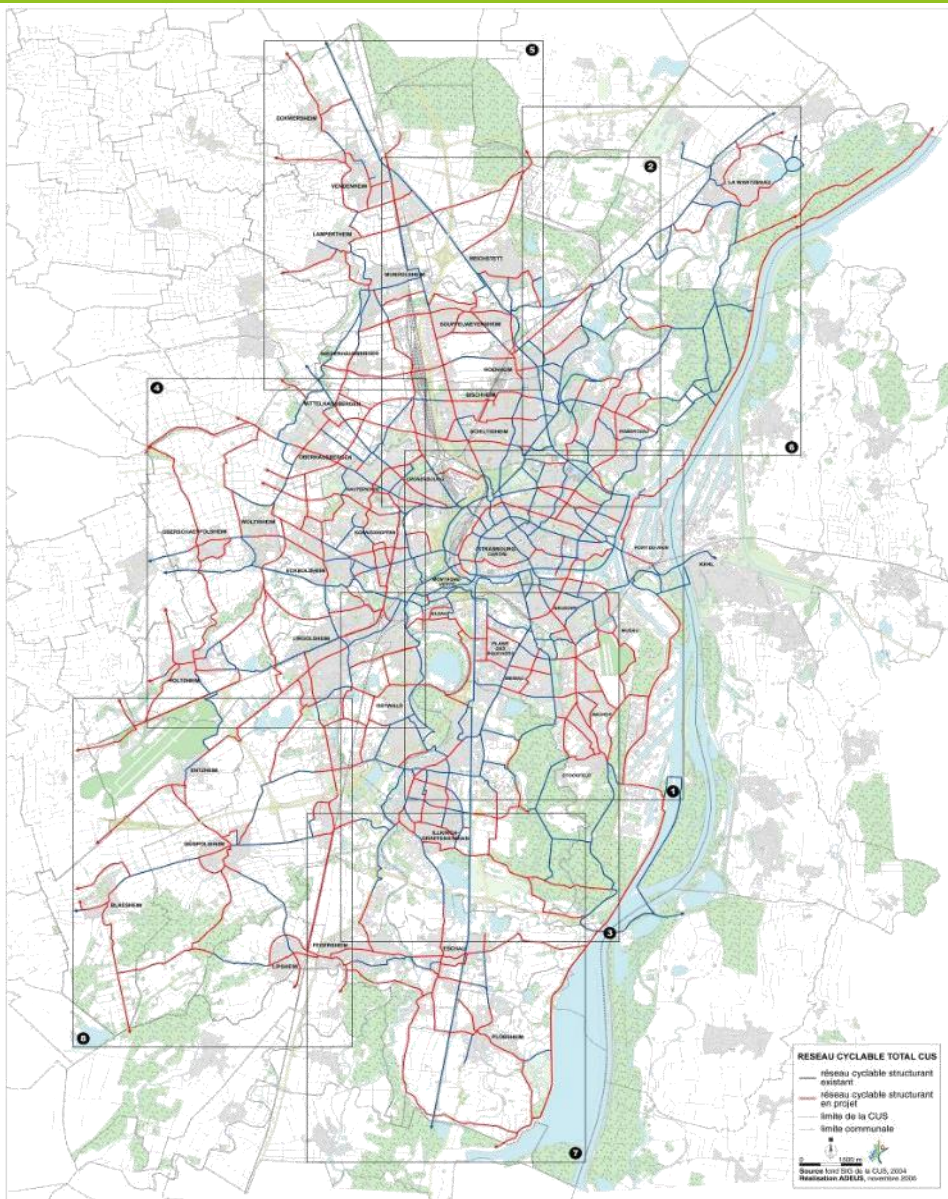


45% for  
pedestrians

30km/h speed  
limit

## Bike = HUGE PART OF THE SOLUTION

- 3 successive blueprints : 1978, 1994, 2010
- More than 600 km bicycle paths
- 5 M € per year for bike to extend the network
- 50% of the road budget until 2018 for the bike



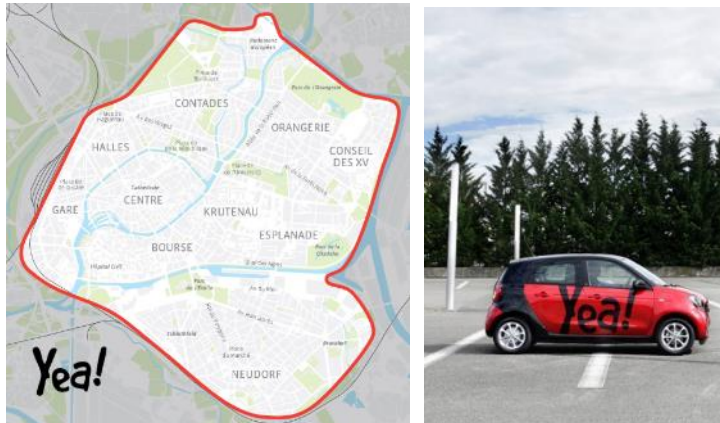


## Bike parking

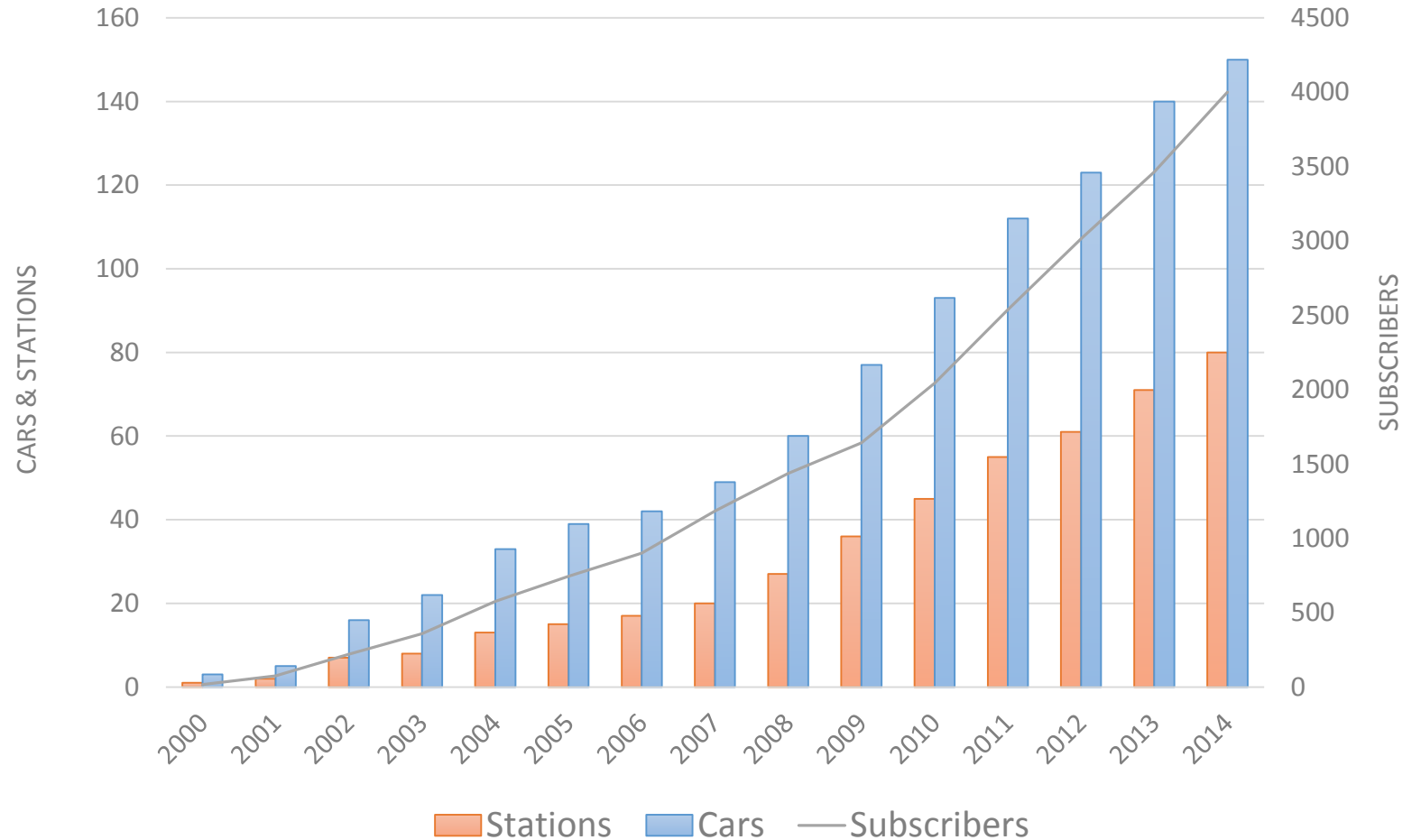
- 13 428 bicycle parking racks in 2013
- 1891 spots in parking facilities
- 21 bike shelters close to tramway stations
- 248 spots in trainstations bike shelters
- Legal obligation to build bike facilities in any new building







## Promoting new ways to use cars : carsharing system



**Mobility management : make people change !**



**177 cars**



**3 buses**



**1 tram**



## Mobility management : make people change !





## Mobility management : make people change !

Optimix - Connexion x

optimix.strasbourg.eu/login

Applications WeTransfer Facebook Intranet Doodle Météo Strasbou... auboulotavelo » Autres favoris

Strasbourg.eu

**optimix**  
FACILITEUR DE MOBILITÉ

IDENTIFIANT MOT DE PASSE CONNEXION

Avec **optimix**,  
Strasbourg Eurométropole  
aide les entreprises,  
les administrations,  
et les associations à mettre  
en œuvre des plans  
de déplacements (PDE).  
Le but est de favoriser  
l'émergence d'une mobilité  
durable, respectueuse  
de l'environnement  
et socialement acceptable,  
améliorer le cadre  
de vie et le bien-être au travail.

**COMMENT  
Y ACCÉDER ?**

Vous souhaitez  
créer un compte ?  
Contactez  
optimix@strasbourg.eu

Téléchargez  
la plaquette  
de présentation  
[en cliquant ici](#)

**TOUT EN UN CLIC AVEC LA PLATEFORME OPTIMIX !**

**UN OUTIL DE  
DIAGNOSTIC  
MOBILITÉ**

**UN OUTIL DE  
CONSEIL  
INDIVIDUALISÉ**

**UN OUTIL DE  
CRÉATION  
D'ÉQUIPAGES  
DE  
COVOITURAGE**

eu/conseilmobilité/fiche/mobilité/5bf8ecb00d478fcab172a26f9ccc8f967954249

book Intranet Doodle Météo Strasbou... auboulotavelo Reprographie 1ère Véloparad... Autres favoris

3. Je prends le Vélo + le Bus + je marche + le Tram + je marche

+ 2 + + E +

Masquer les détails

Infos Itinéraire et plan

Départ A pied En vélo En voiture En transport en commun Arrivée

Mapbox

Départ : AVENUE DE LA PAIX, STRASBOURG  
07:40

Rouler jusqu'à TAULER  
1.3km - 4 minutes  
[Voir l'itinéraire détaillé](#)

TAULER  
07:45

2

Prendre le Bus 2 en direction de PONT DU RHIN jusqu'à l'arrêt OBSERVATOIRE



## Mobility management : make people change !





# Reinventing public spaces

After



Before









Before



After









Before



After





40 000 cars per day

Before





Before



After



# What's next ?





## Les Quais (the riverfront project)







## Les Quais (the riverfront project)



**7525**  
contributors



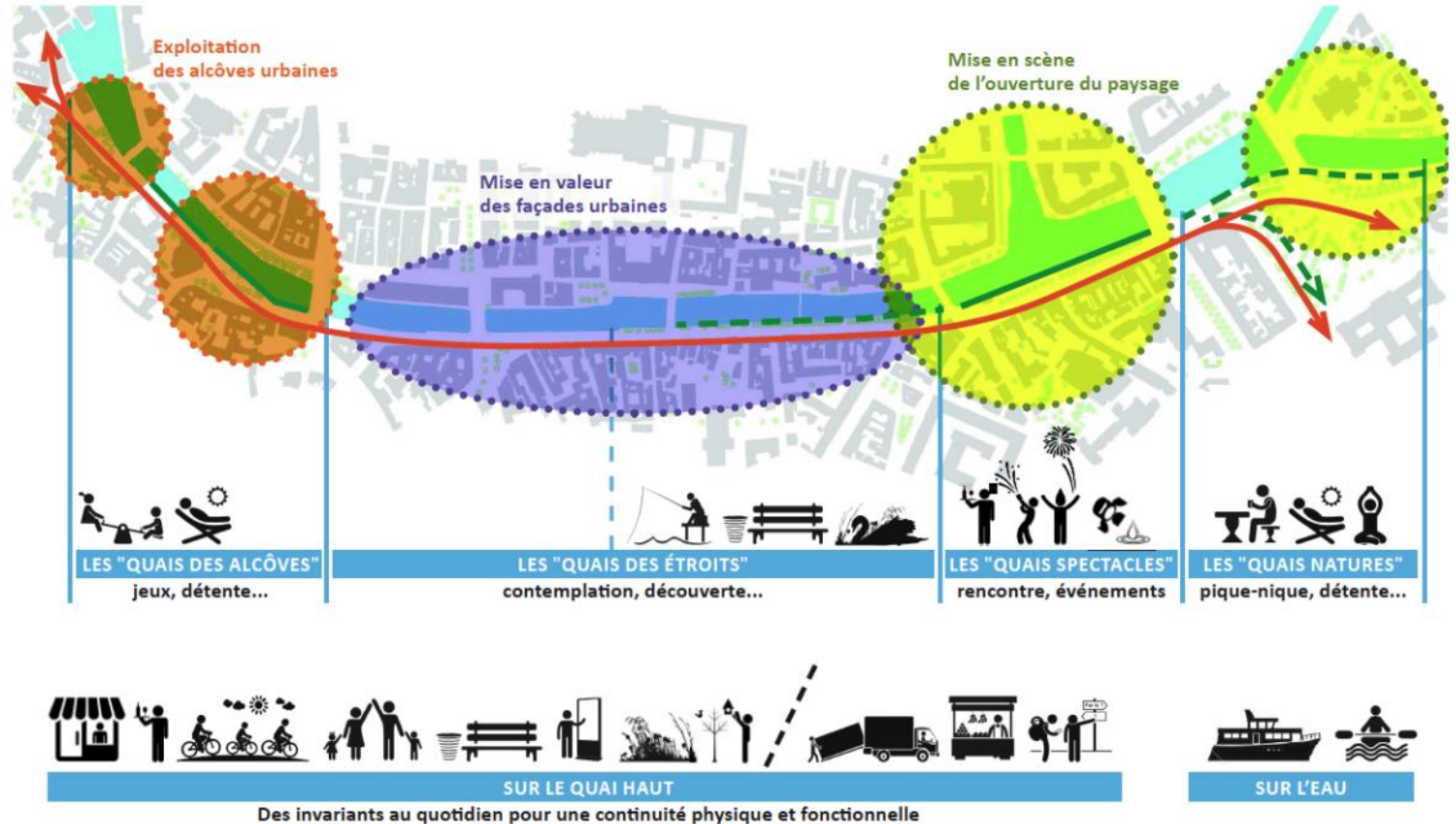
**10060**  
visitors



**1609**  
feedbacks



**176**  
proposals



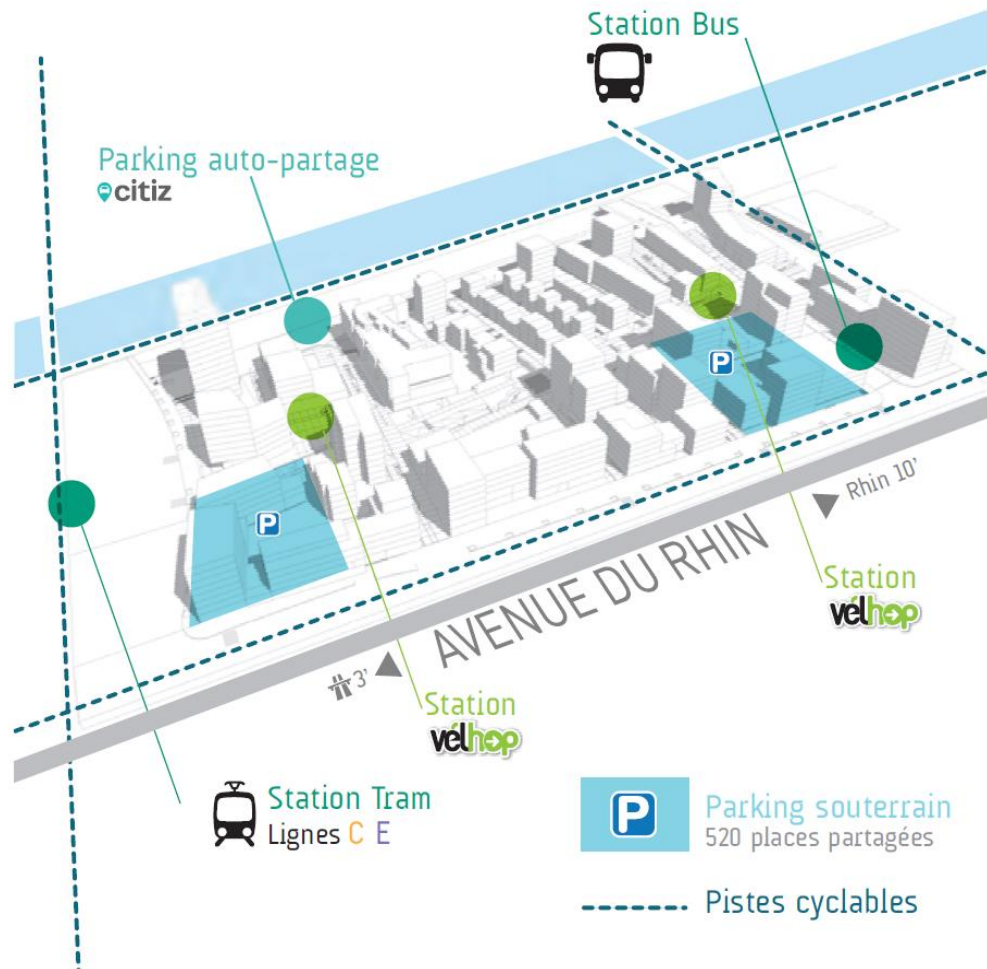


## Le projet des Deux Rives (Two Banks)





## The birth of a new way of living : the Danube District



# 3 advice for Oslo



# N°1 Have a VISION of what you want to achieve



***"The success of the mobility policy of Strasbourg does not come from pure technical choices.***

***It comes from our town planning policy which prescribe the right transport mode we should promote to make our vision of the city a reality"***

***Roland RIES – Mayor of Strasbourg***

## N°2 Listen to the citizens but be strong, be courageous, hold on !



Janette Sadik-Kahn was the commissioner of the New York City Department of Transportation from 2007-2013



## N°3 Make something of your streets, they are so precious !

